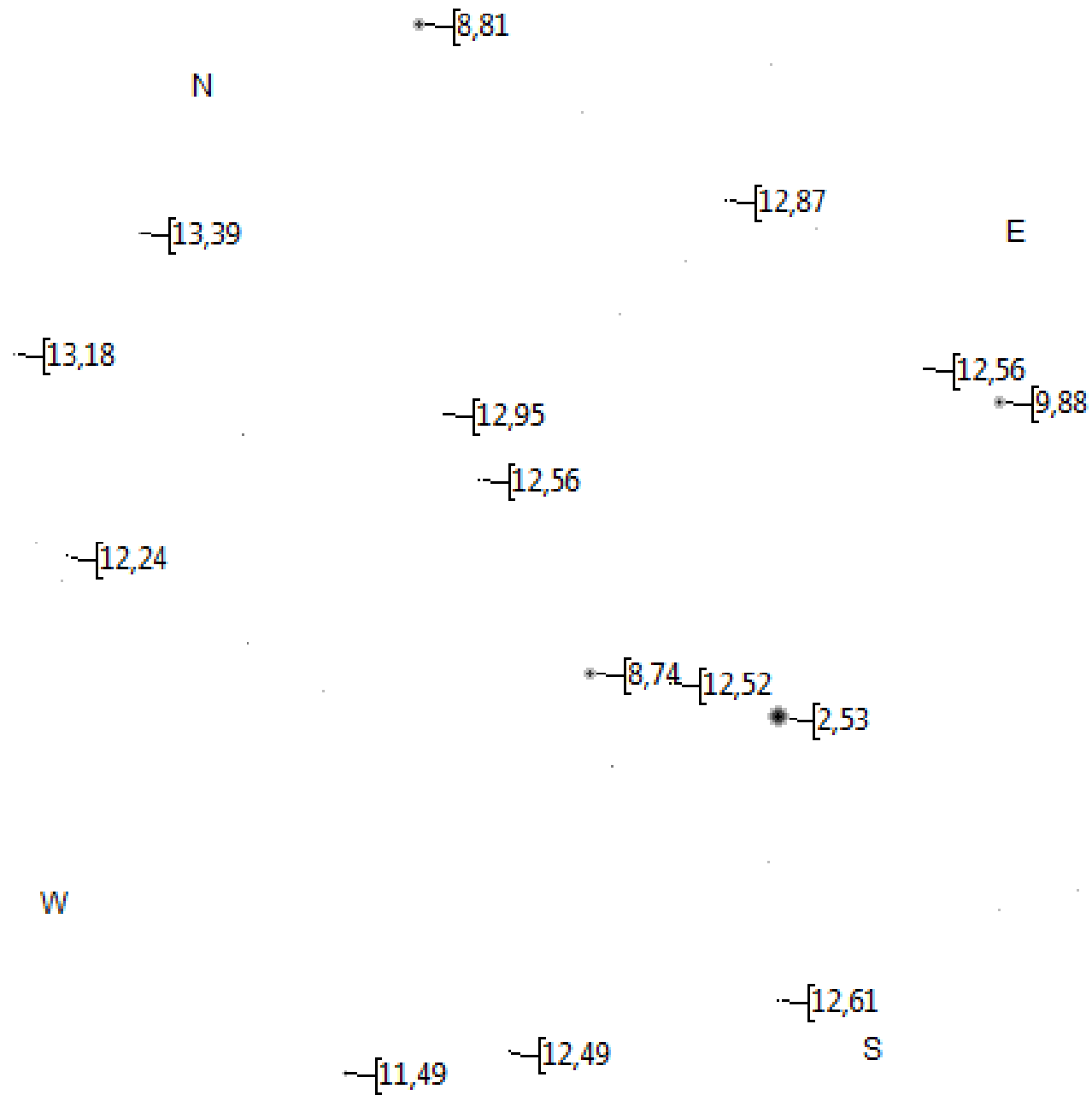


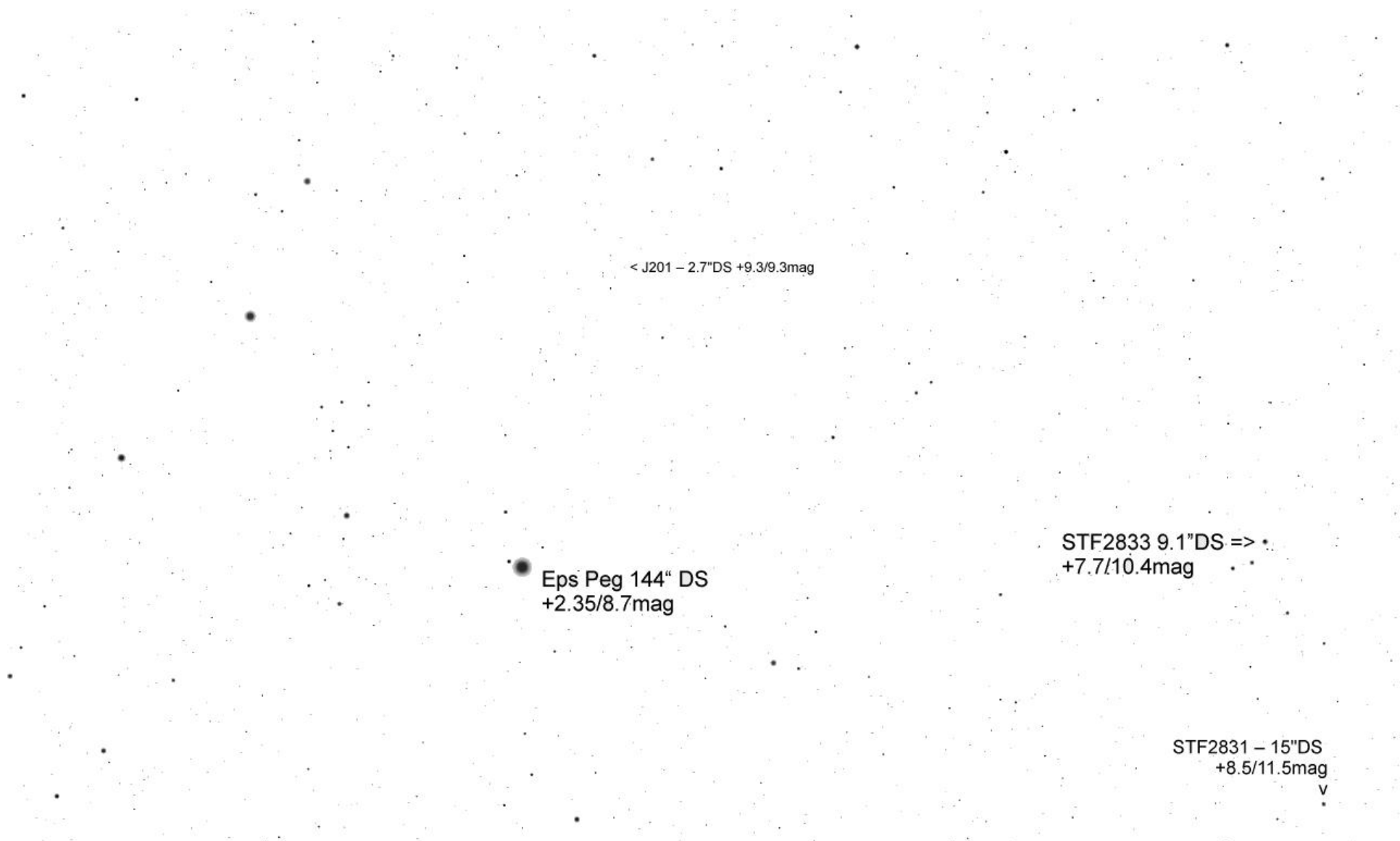
Fische

Pegasus

Pegasus



TML Eps Peg per Ende Oktober 15' FoV



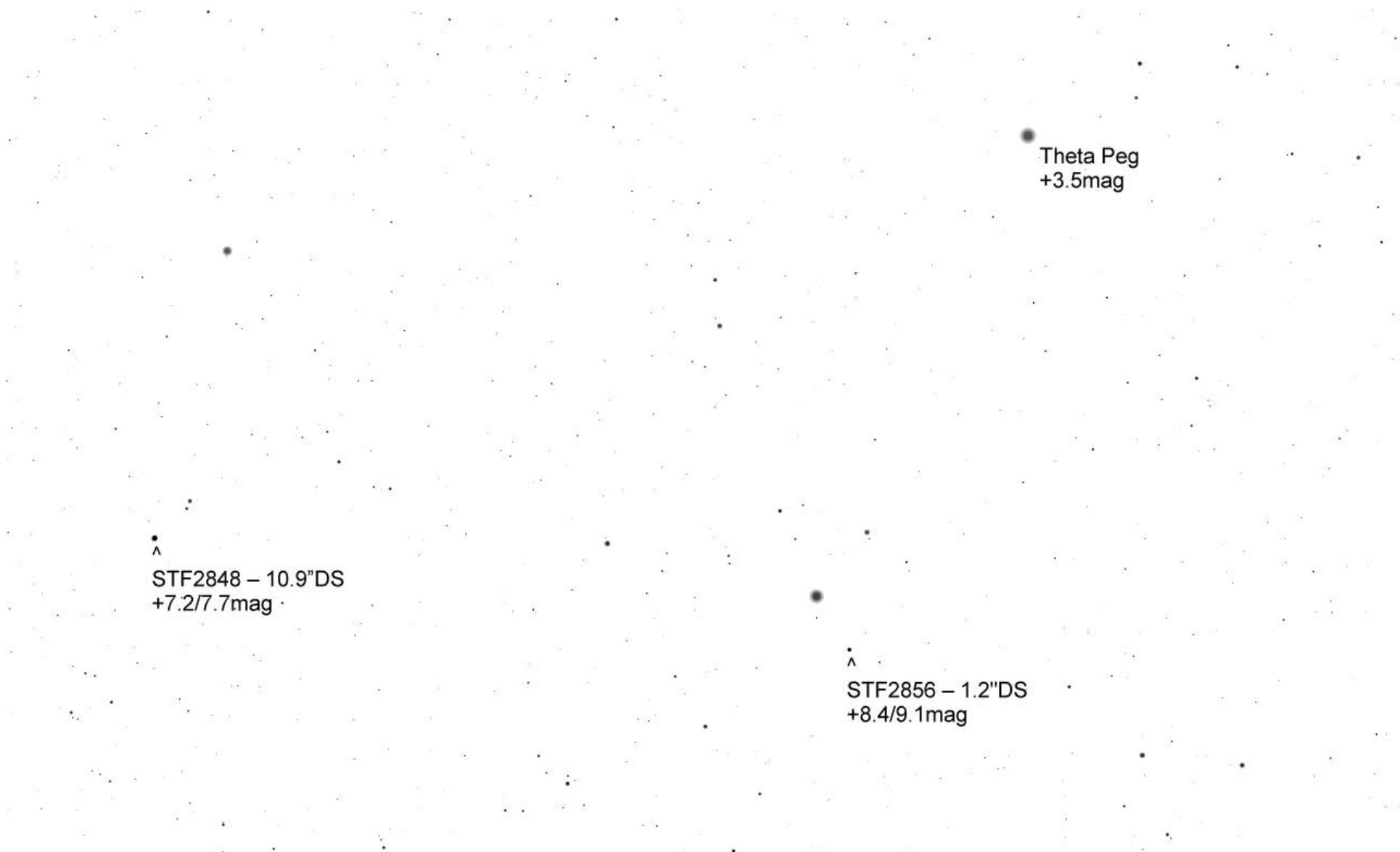
• < STF2833 – 9.1"DS +7.7/10.4mag

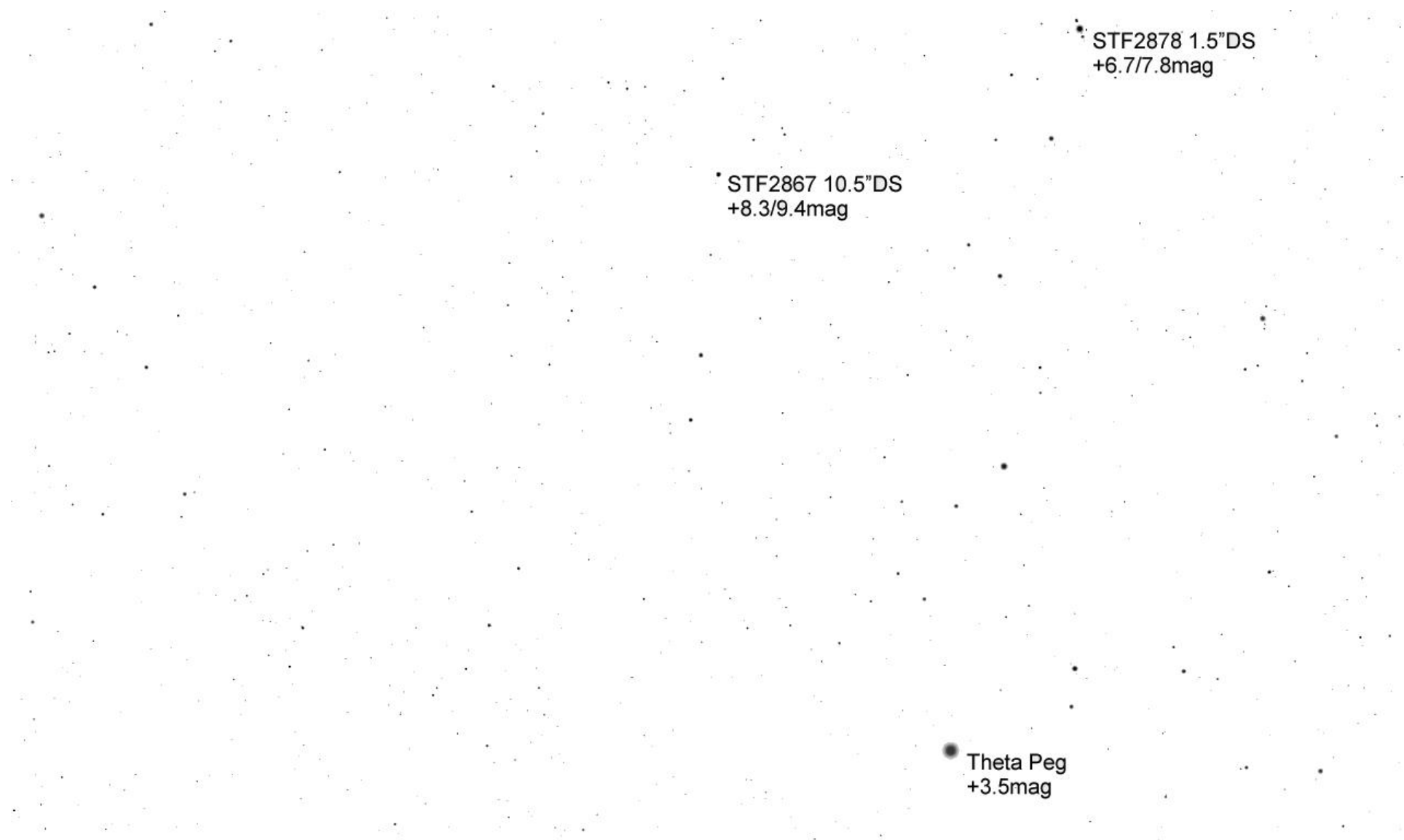
• < STF2831 – 15"DS +8.5/11.5mag

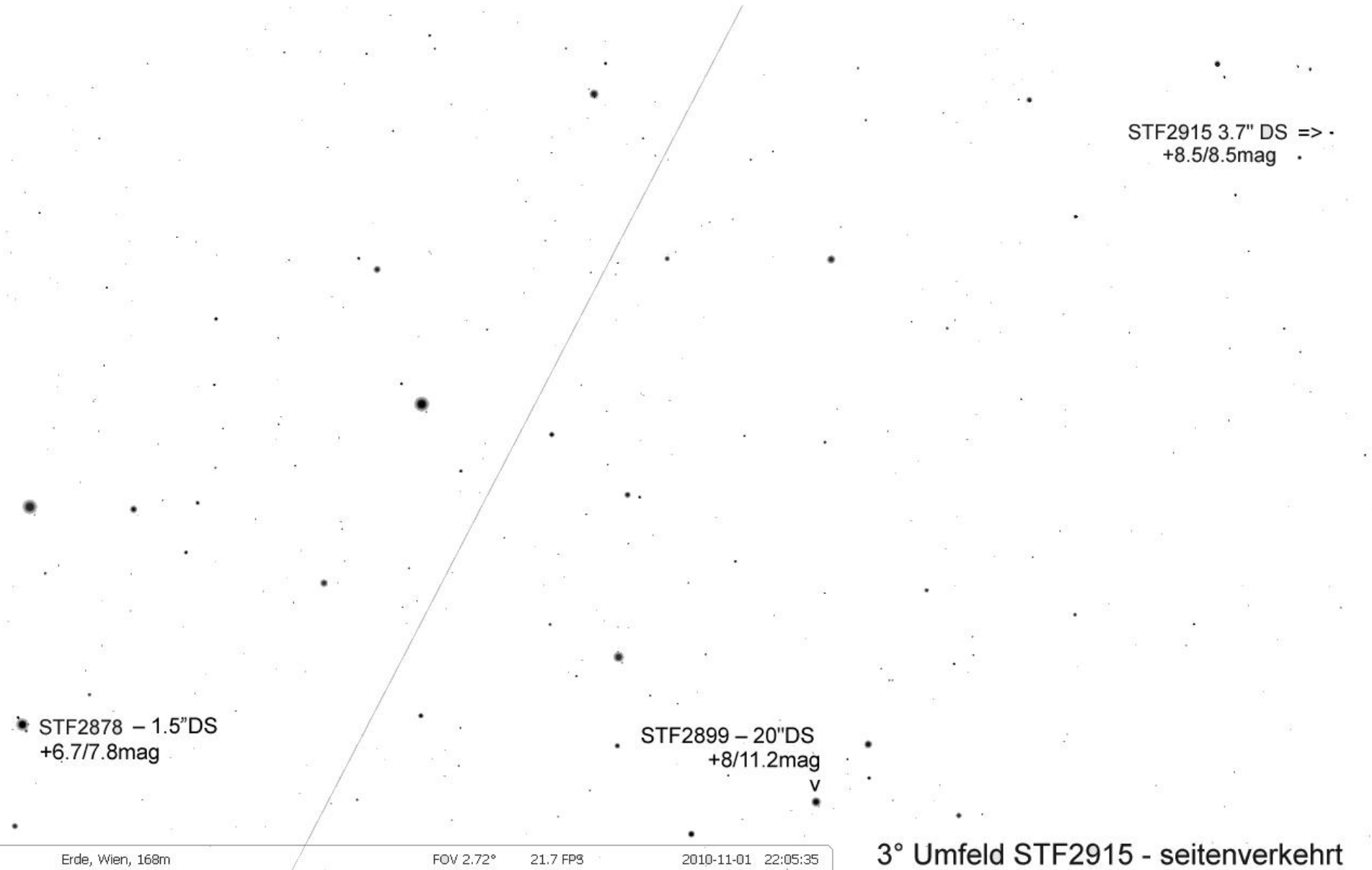
^
STT452 – 0.7"DS +9/9.6mag

STF2848 – 10.9"DS
+7.2/7.7mag

v







• STF2878 – 1.5" DS
+6.7/7.8mag

• STF2899 – 20" DS
+8/11.2mag
v

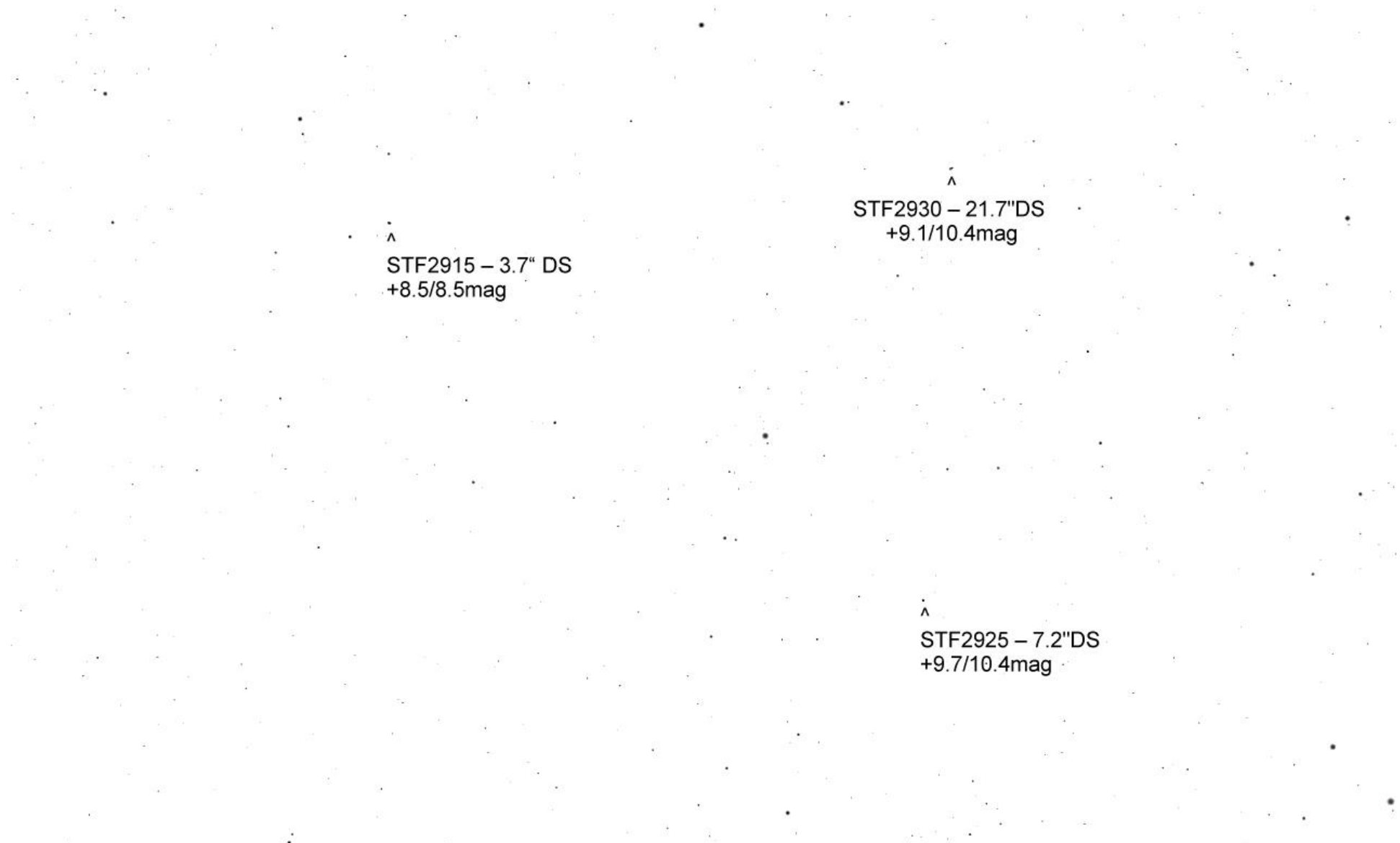
• STF2915 3.7" DS =>
+8.5/8.5mag •

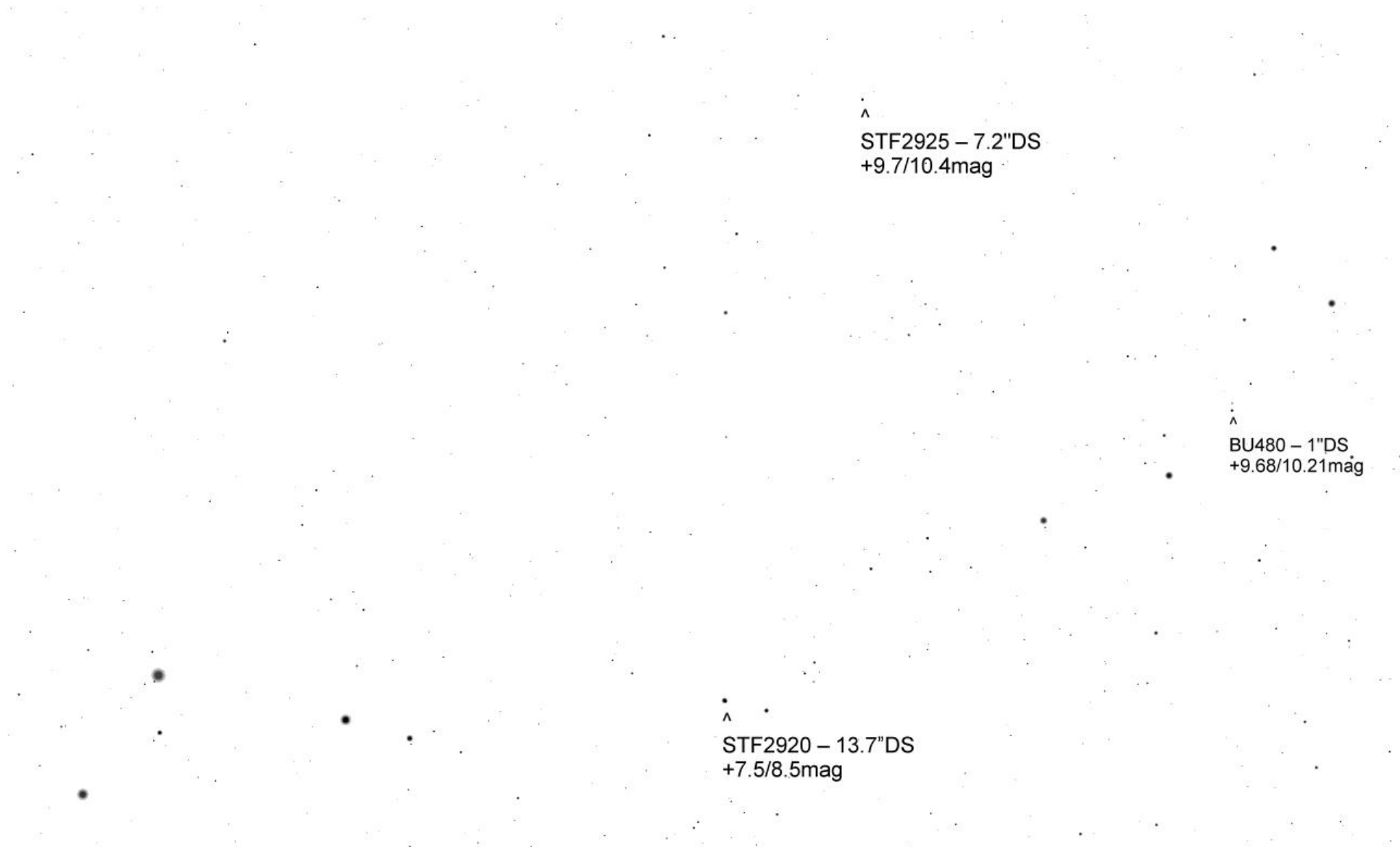
Erde, Wien, 168m

FOV 2.72° 21.7 FPS

2010-11-01 22:05:35

3° Umfeld STF2915 - seitenverkehrt

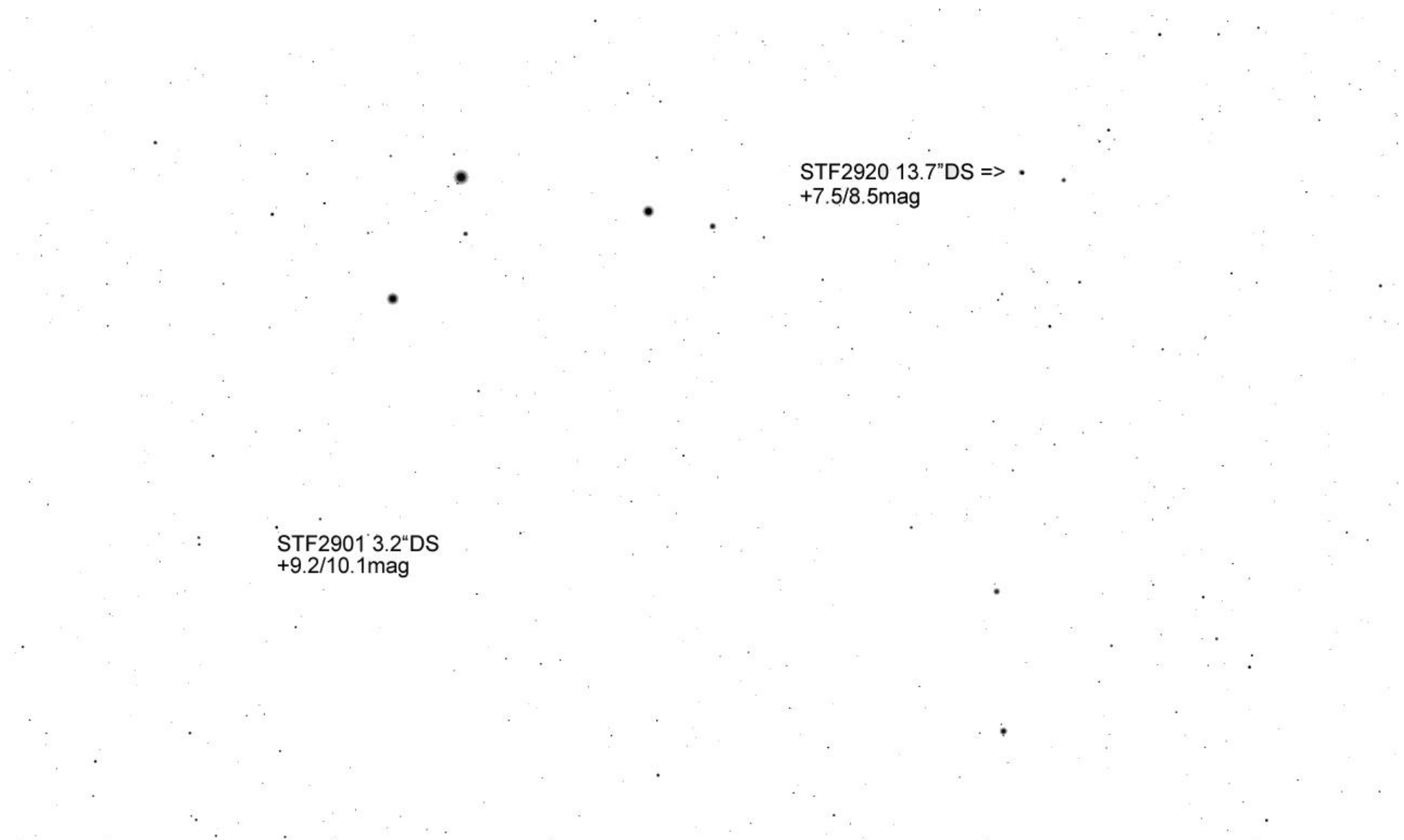




^
STF2925 – 7.2"DS
+9.7/10.4mag

^
BU480 – 1"DS
+9.68/10.21mag

^
STF2920 – 13.7"DS
+7.5/8.5mag



STF2901 3.2" DS
+9.2/10.1mag

STF2920 13.7" DS => •
+7.5/8.5mag