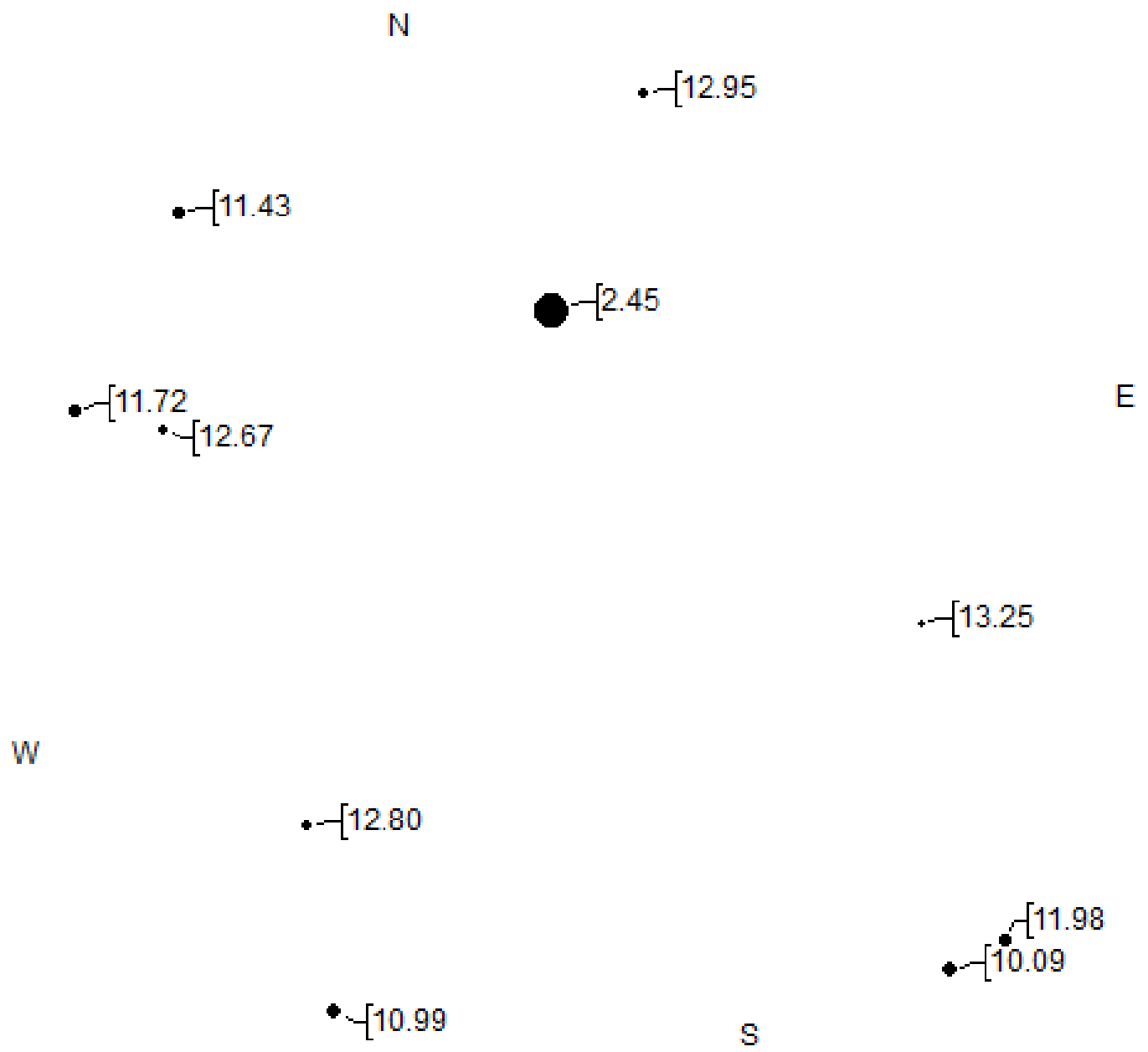


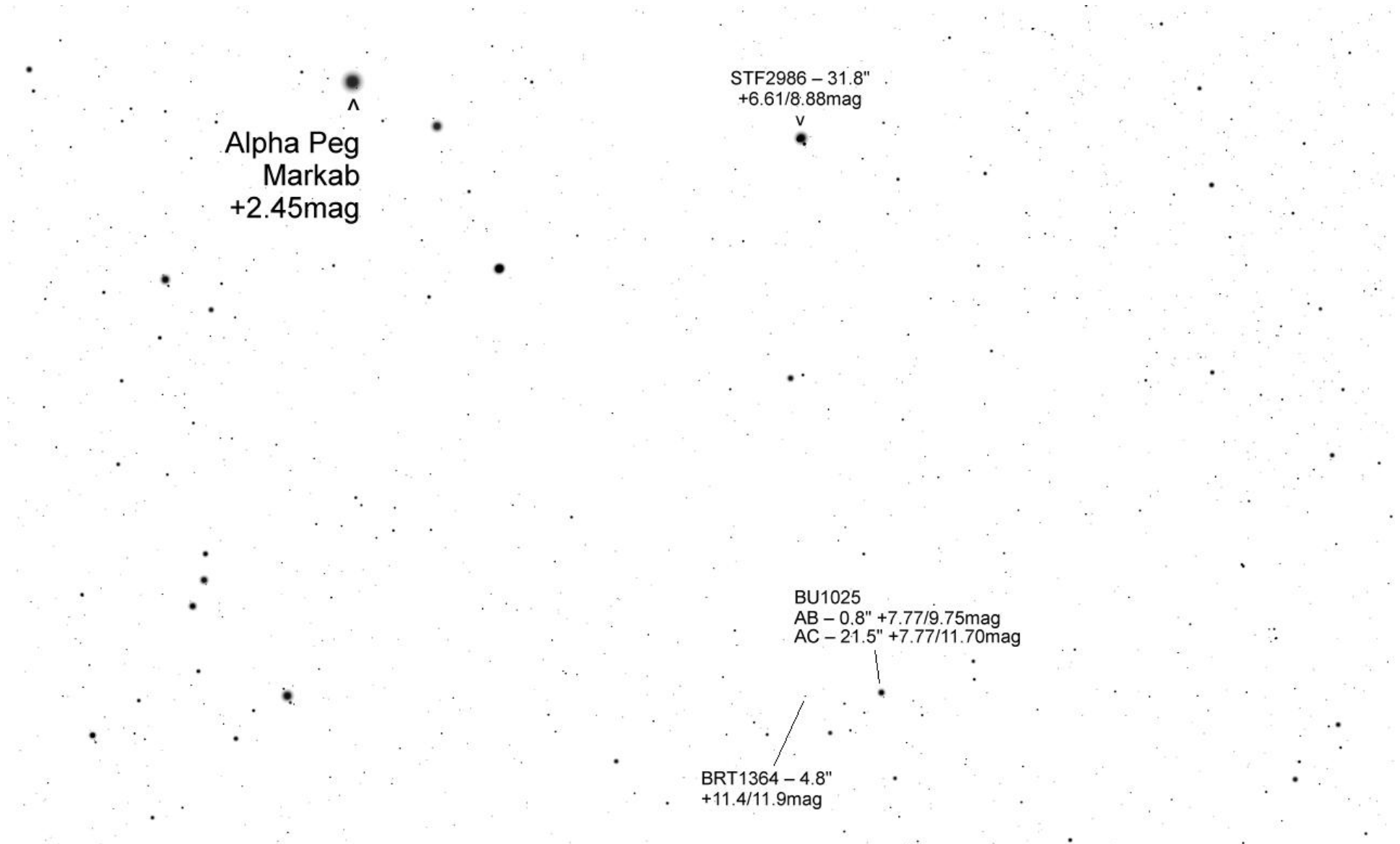
Fische

Pegasus

Pegasus



TML Alpha Peg per Ende Oktober 15' FoV



Alpha Peg  
Markab  
+2.45mag

STF2986 – 31.8"  
+6.61/8.88mag

v

BU1025  
AB – 0.8" +7.77/9.75mag  
AC – 21.5" +7.77/11.70mag

BRT1364 – 4.8"  
+11.4/11.9mag



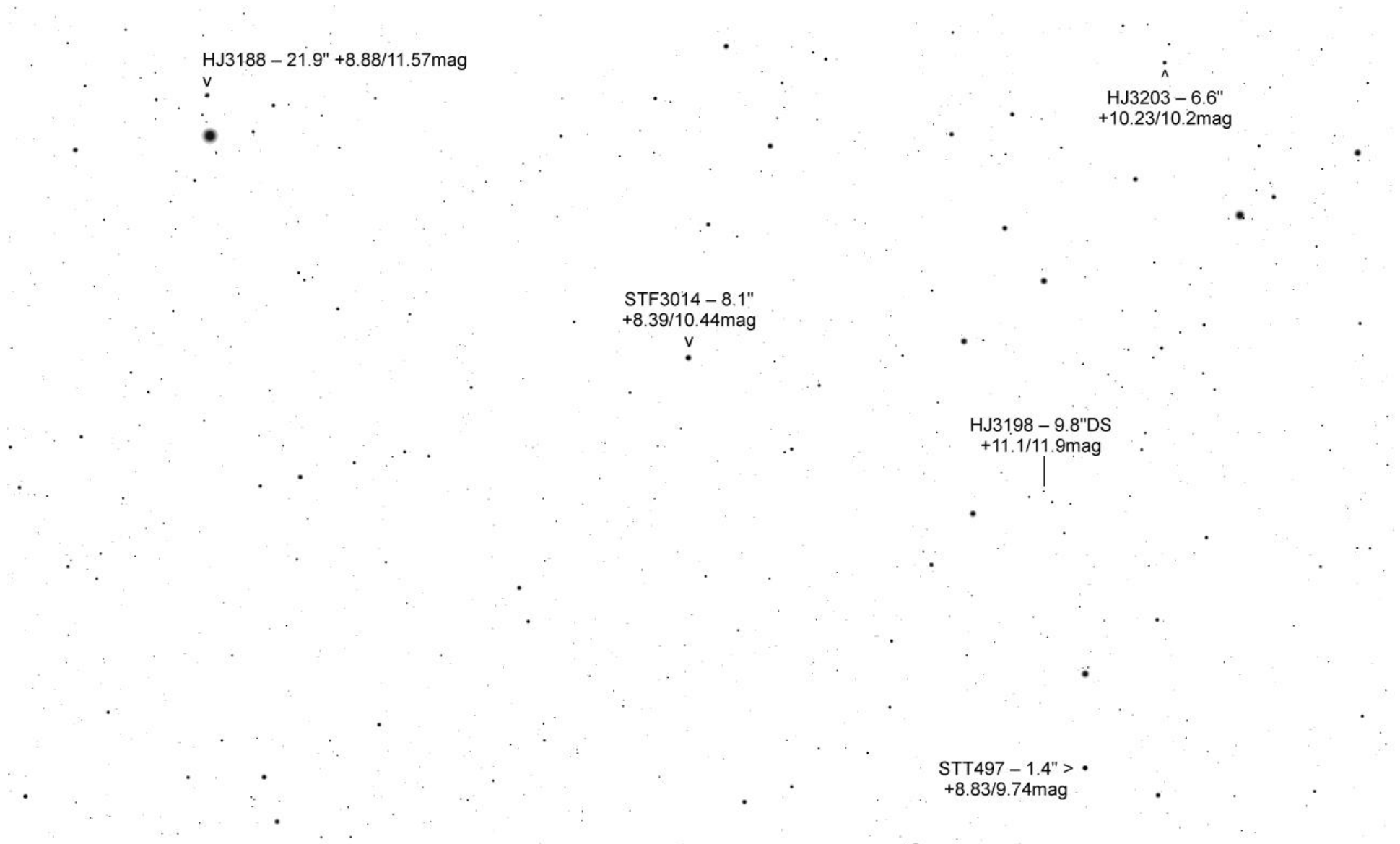
Erde, 'A1 Wien, 168m

FOV 2.75°

15.8 FPS

2014-10-30 22:00:03

3° Umfeld STF2991 – seitenverkehrt



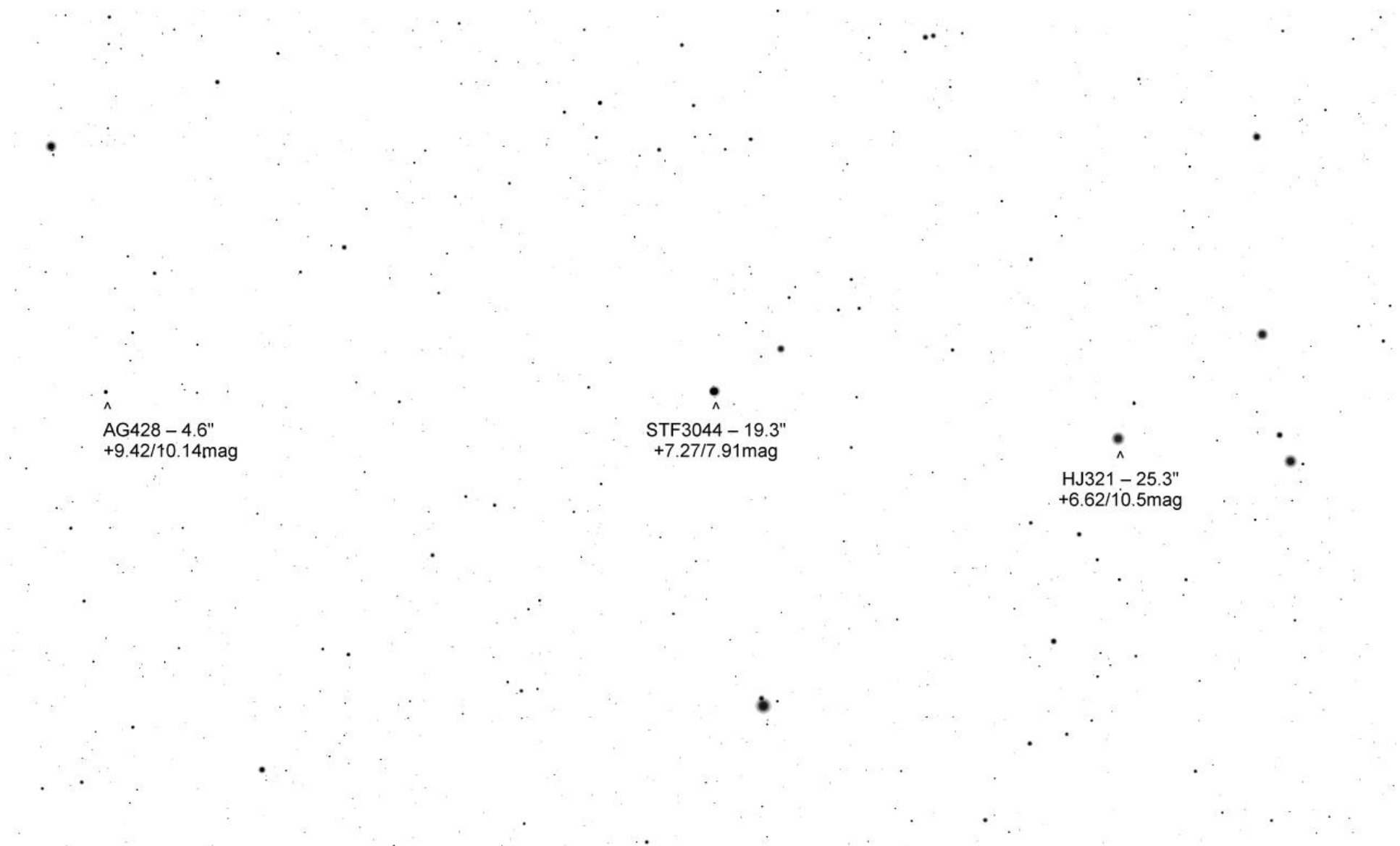
BRT1367 - 4.5" >  
+11.2/11.8mag

HJ315 - 20.2"  
+10.37/10.51mag

AG428 - 4.6"  
+9.42/10.14mag

A1242 - 1"  
+9.37/9.69mag

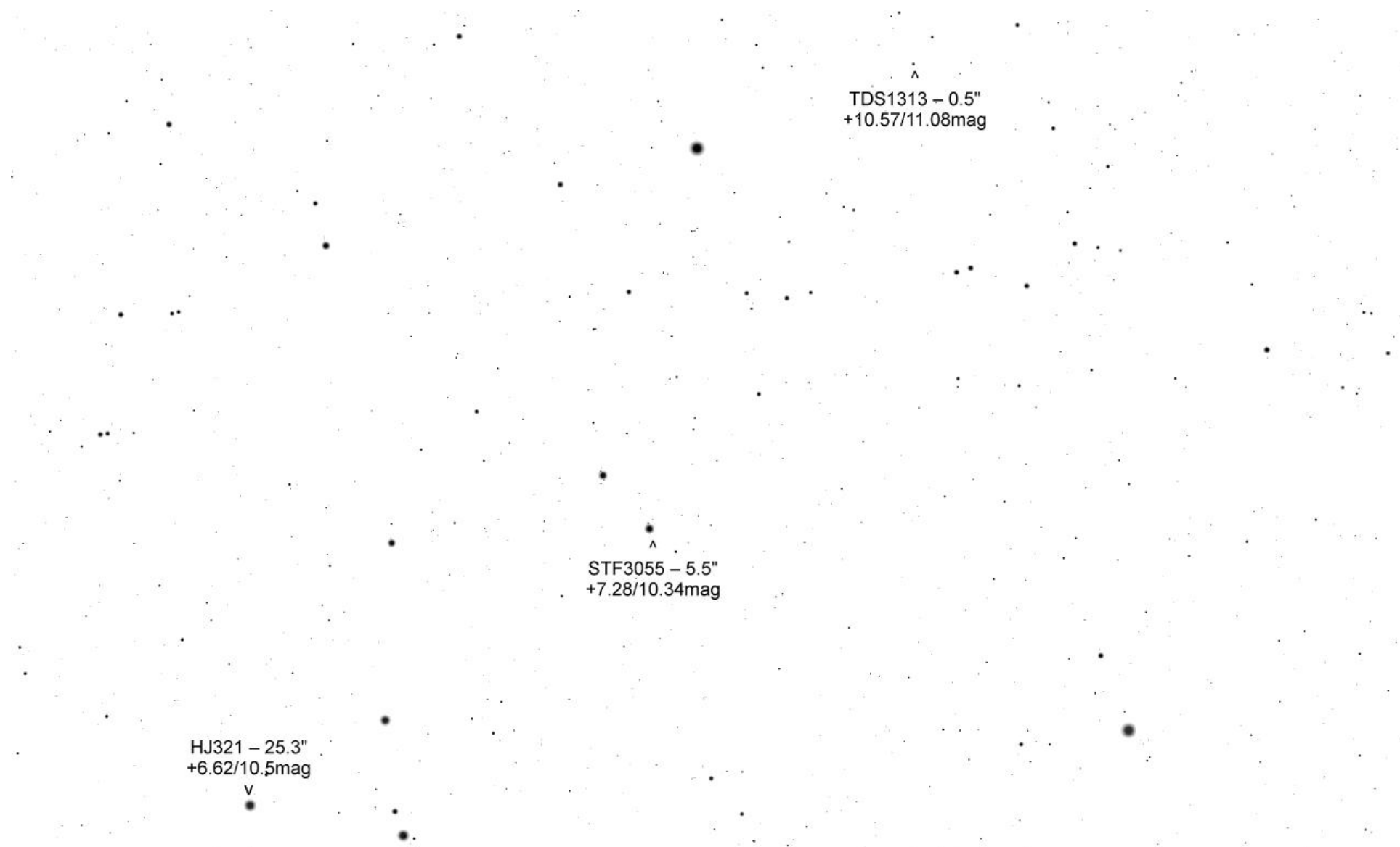
HJ3203 - 6.6"  
+10.23/10.2mag



^  
AG428 – 4.6"  
+9.42/10.14mag

^  
STF3044 – 19.3"  
+7.27/7.91mag

^  
HJ321 – 25.3"  
+6.62/10.5mag



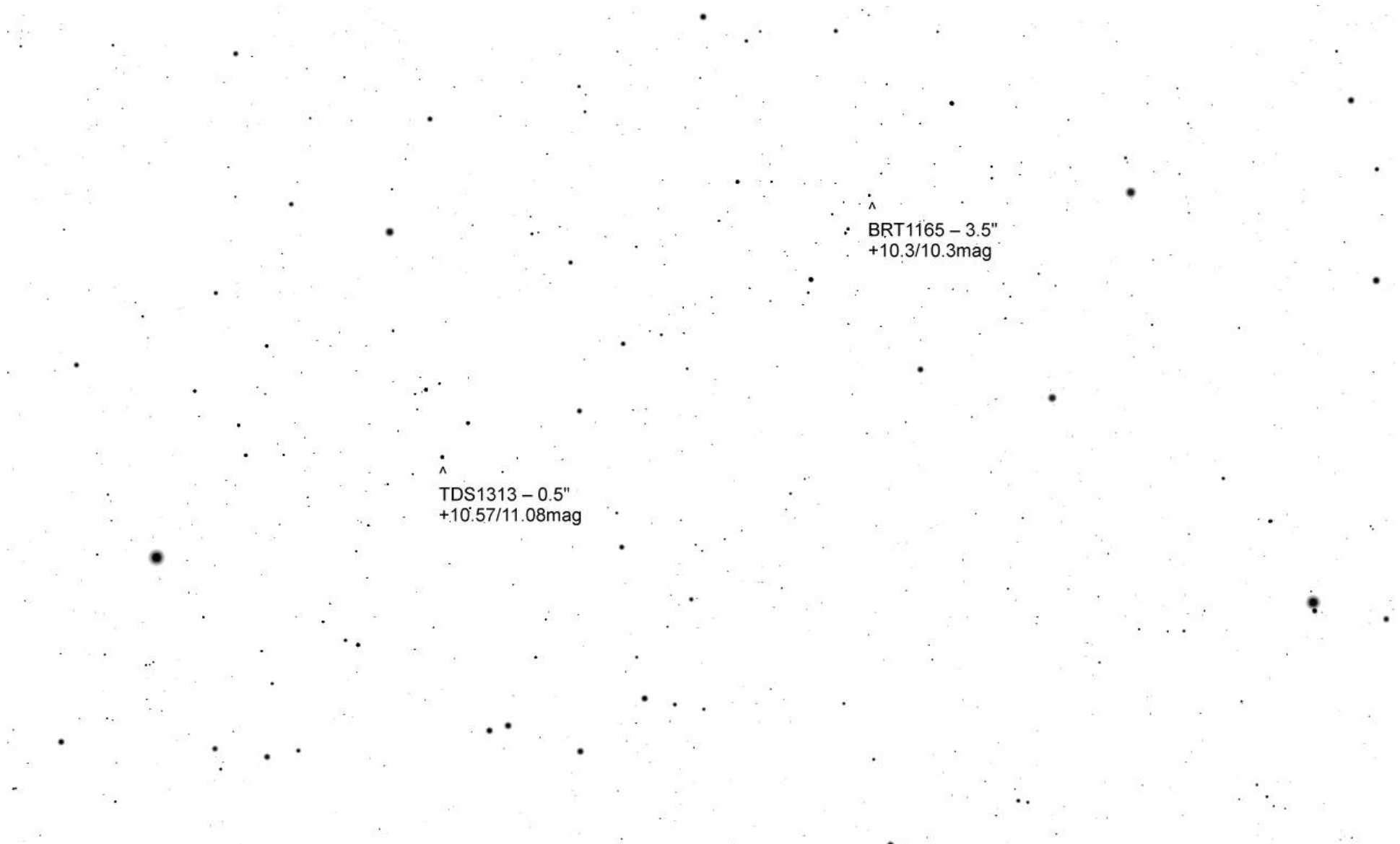
^  
TDS1313 – 0.5"  
+10.57/11.08mag

^  
STF3055 – 5.5"  
+7.28/10.34mag

HJ321 – 25.3"  
+6.62/10.5mag

v





^  
TDS1313 – 0.5"  
+10.57/11.08mag

^  
BRT1165 – 3.5"  
+10.3/10.3mag